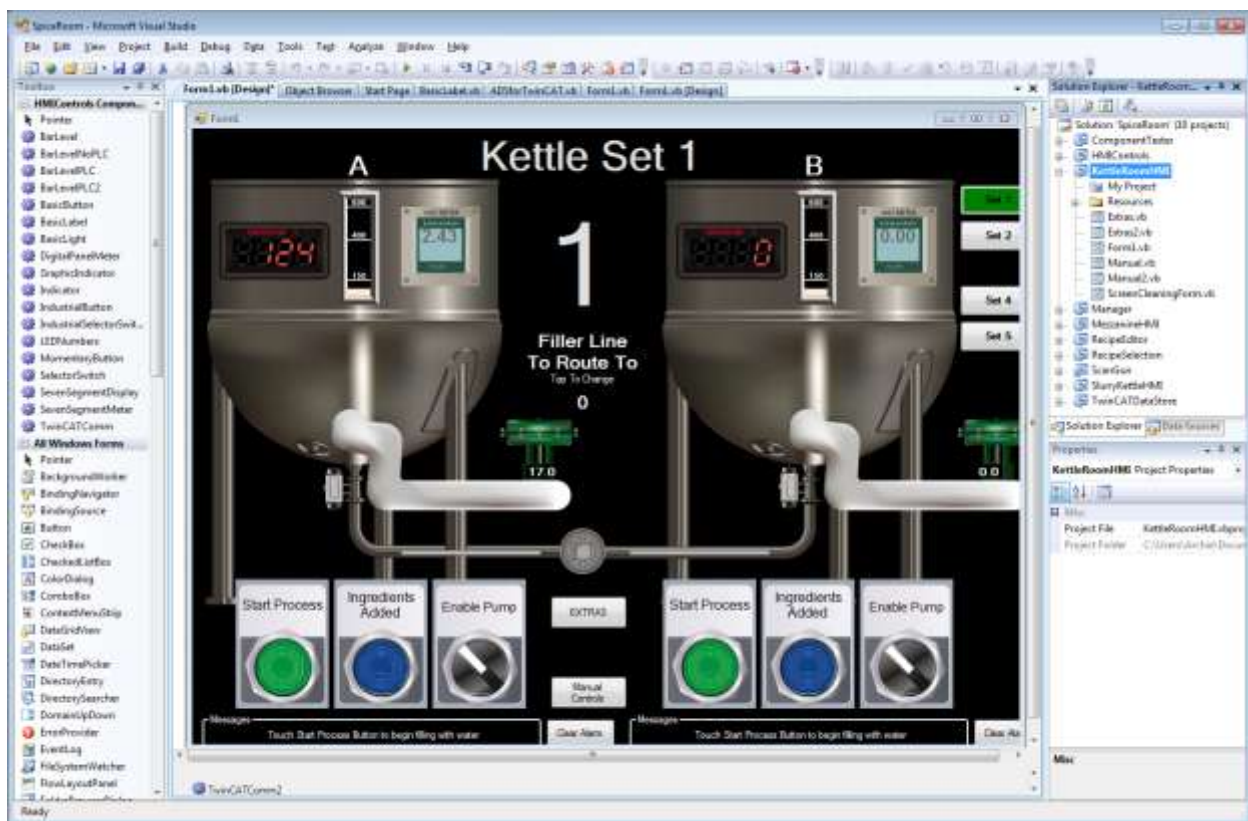


AdvancedHMI

A different approach to HMI development



Quick Start Guide

Quick Start

- 1) Visual Studio 2008 (or higher) or Visual Basic Express will need to be installed on the development PC. If you do not already have one installed, you can get Visual Basic Express from Microsoft at the following link:

<http://www.microsoft.com/visualstudio/en-us/products/2010-editions/visual-basic-express>

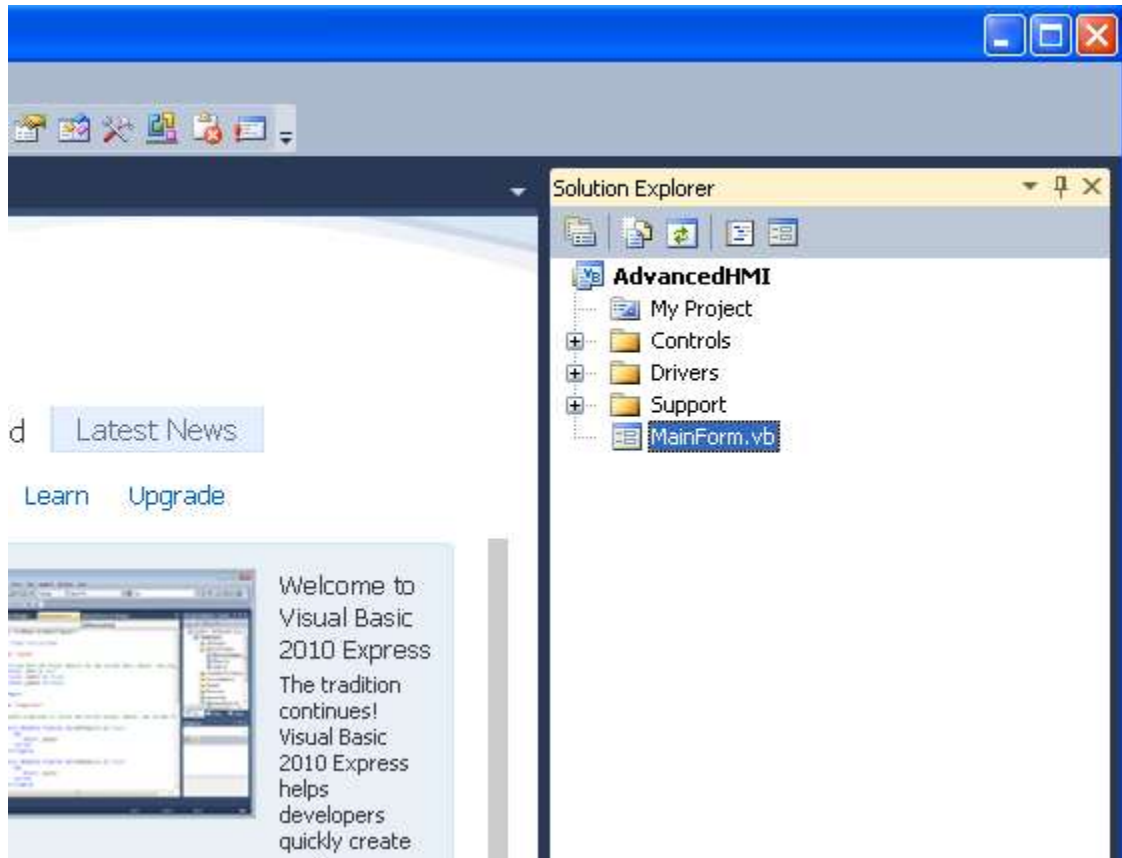
- 2) You will now need the AdvancedHMI project, this can be downloaded from:

<http://sourceforge.net/projects/advancedhmi/>

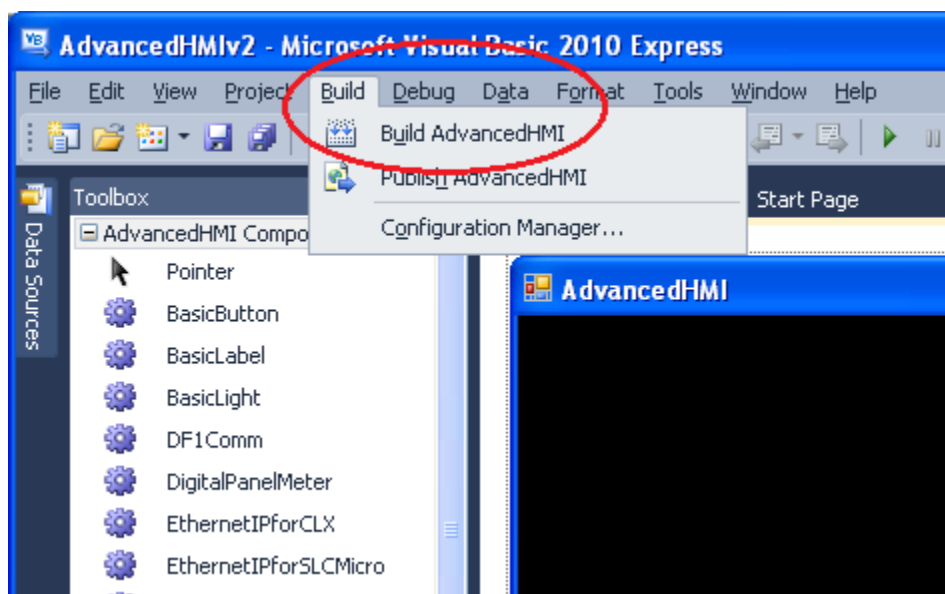
- 3) After downloading AdvancedHMI, extract the files from the zip file
- 4) Open the solution file (AdvancedHMI.sln) by either double-clicking or starting Visual Basic and going to File->Open Project and browsing to the AdvancedHMI.sln file
Note : If you are using Visual Basic 2010 or higher, you will see an upgrade wizard. Just click the Finish button to proceed

AdvancedHMI

- 5) Open the MainForm by double-clicking the name in the Solution Explorer

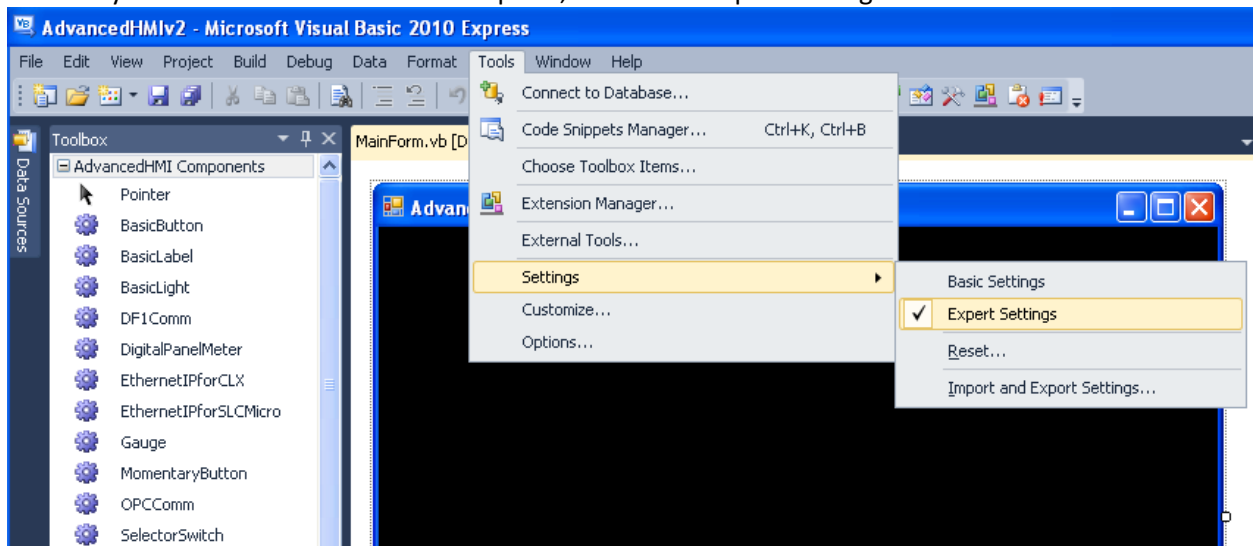


- 6) The project will now need to be compiled in order to add the components to the Toolbox

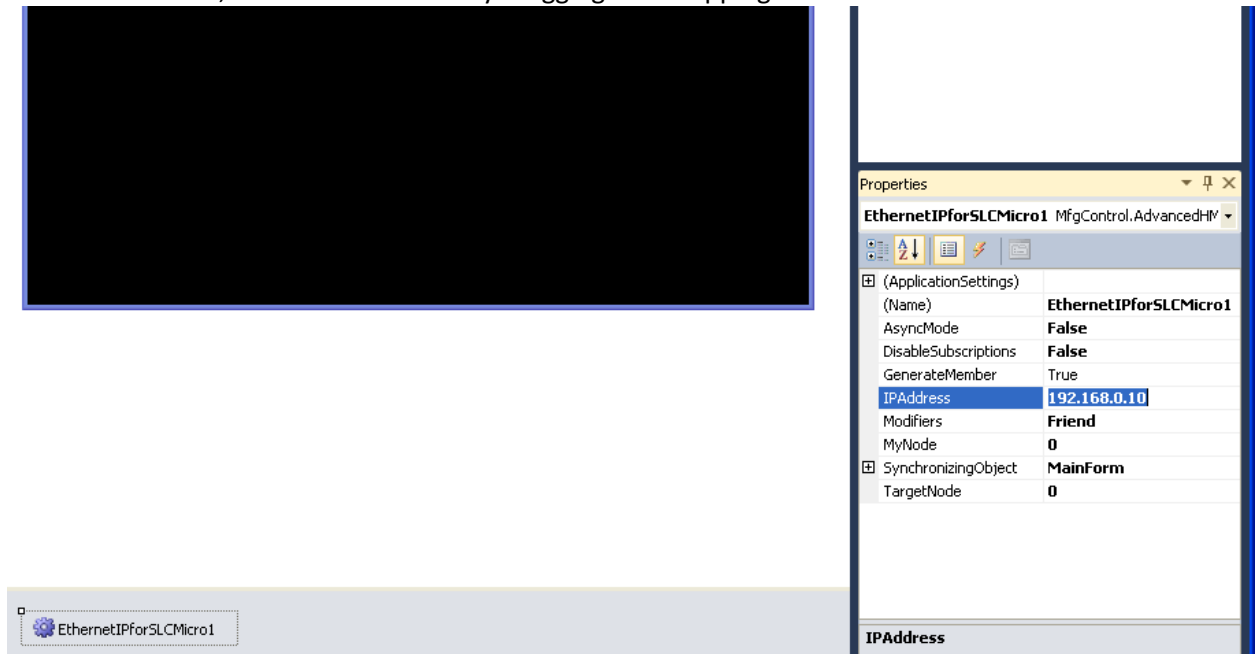


AdvancedHMI

Note : If you do not see the Build menu option, Enable the Expert settings:



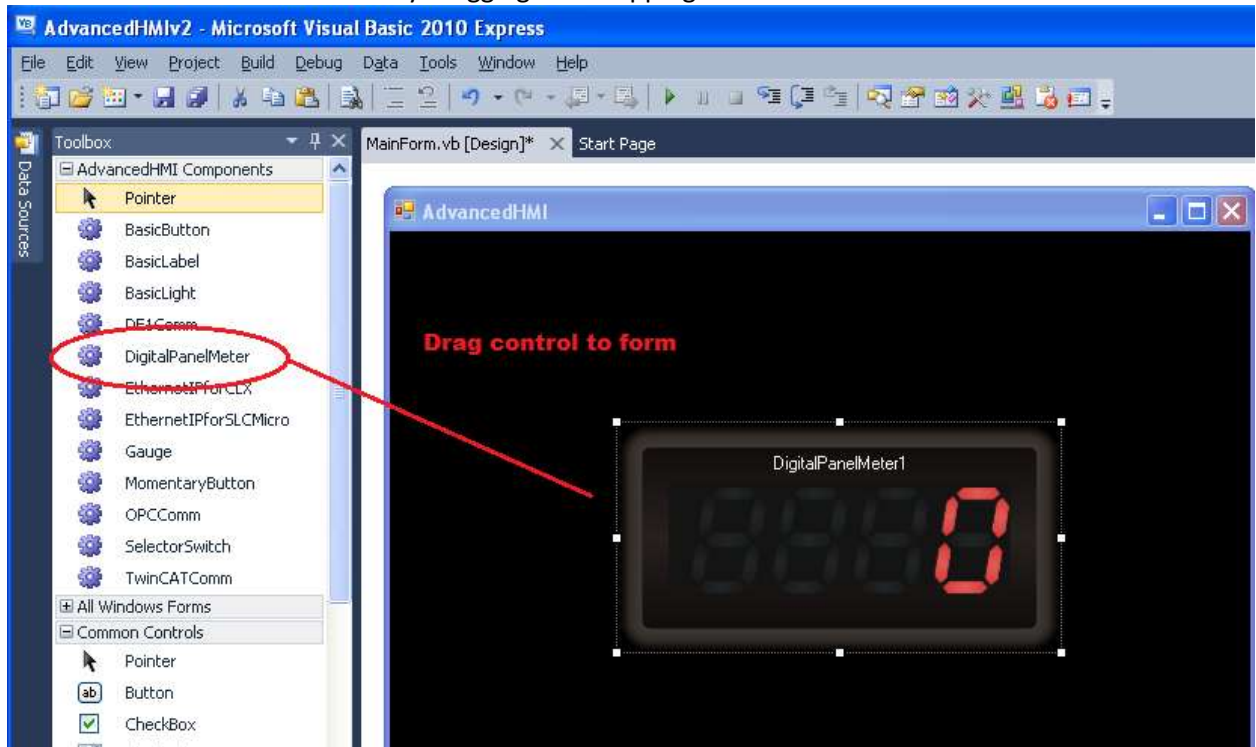
- 7) From the ToolBox, add a Comm driver by dragging and dropping to the form.



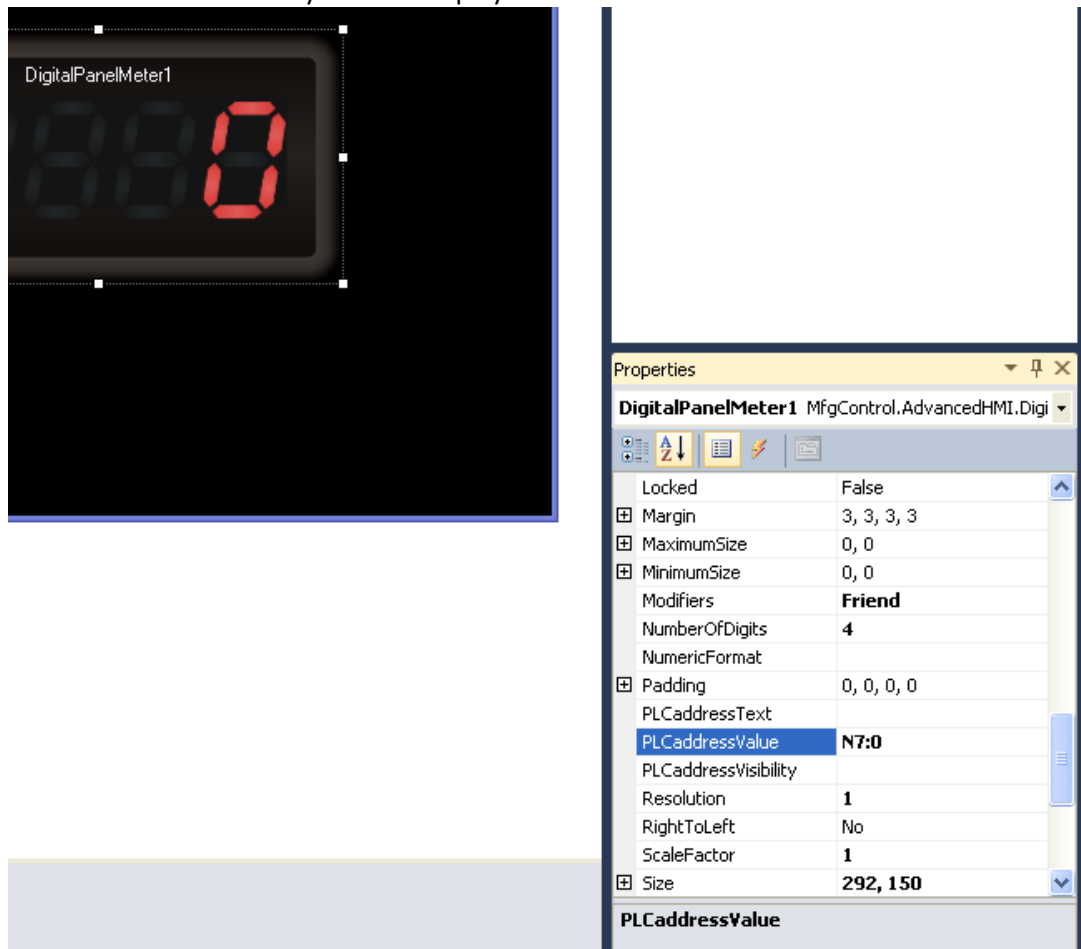
- 8) Set the appropriate properties for the comm driver you selected, e.g. IPAddress. See figure above.

AdvancedHMI

- 9) Add a visual control to the form by dragging and dropping from the Toolbox.



10) Set the PLC address that you want displayed on the selected control.



11) Be sure the PLC is connected and ready, then Run the application by clicking the VCR play button or pressing F5

